

Specifications

| | | |
|--------------------------------|--|--------------------------|
| Nominal Voltage | 12V | |
| Nominal Capacity | 104AH | 20HR (1.75V/cell) |
| Dimension | Length | 325mm (12.8 inches) |
| | Width | 170mm (6.69 inches) |
| | Height | 213mm (8.39 inches) |
| | Total Height (with Terminal) | 216mm (8.50 inches) |
| Approximate Weight | 31.48 kg (69.40 lbs) | |
| Battery Type | Valve Regulated Lead-Acid Battery, AGM Design | |
| Terminal Type | IT | |
| Max. Discharge Current | 1650A | |
| Internal Resistance | 3.6mΩ | |
| Conductance Value | 1550S | |
| Operating Temp. Range | Discharge: | -15°C (5°F)~50°C (122°F) |
| | Charge: | 0°C (32°F)~40°C (104°F) |
| | Storage: | -15°C (5°F)~40°C (104°F) |
| Nominal Operating Temp. Range | 25±3°C (77±5°F) | |
| Acceptable Float Voltage Range | 13.5V-13.8V at 25°C (77°F) | |
| Container Material | ABS (UL94 V-0) flame retardant case | |
| Self Discharge | ≤ 3% of capacity declined per month at 25°C (77°F) | |



Applications

- Uninterruptible Power Supply (UPS)
- Emergency power supply
- Emergency lighting
- Electronic apparatus and equipment
- Solar power systems



Constant Current Discharge (Amperes Per Battery) at 25°C (77°F)

| F.V. (V/cell) \ Discharge Time | 5min | 10min | 15min | 30min | 1h | 2h | 3h | 5h | 8h | 10h | 20h |
|--------------------------------|-------|-------|-------|-------|------|------|------|------|------|------|------|
| 1.60V | 372.2 | 264.8 | 220.6 | 131.0 | 71.2 | 39.7 | 28.9 | 18.9 | 12.6 | 10.3 | 5.33 |
| 1.67V | 355.1 | 254.1 | 214.0 | 128.3 | 70.3 | 39.0 | 28.4 | 18.7 | 12.5 | 10.1 | 5.30 |
| 1.70V | 324.7 | 239.6 | 203.6 | 124.0 | 68.2 | 37.9 | 27.6 | 18.2 | 12.2 | 10.0 | 5.26 |
| 1.75V | 297.0 | 225.1 | 193.1 | 119.2 | 65.5 | 36.5 | 26.8 | 17.9 | 12.0 | 9.81 | 5.20 |
| 1.80V | 264.0 | 204.6 | 179.2 | 112.4 | 62.5 | 35.2 | 26.0 | 17.5 | 11.7 | 9.60 | 5.08 |
| 1.85V | 222.1 | 179.5 | 161.7 | 104.9 | 59.9 | 33.8 | 25.0 | 16.8 | 11.4 | 9.37 | 4.94 |

Constant Power Discharge (Watts Per Cell) at 25°C (77°F)

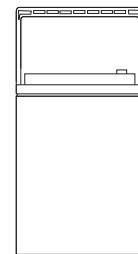
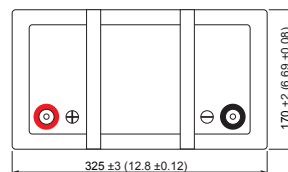
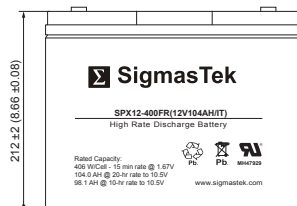
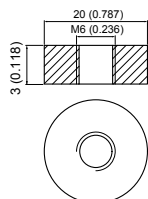
| F.V. (V/cell) \ Discharge Time | 5min | 10min | 15min | 30min | 1h | 2h | 3h | 5h | 8h | 10h | 20h |
|--------------------------------|-------|-------|-------|-------|-------|------|------|------|------|------|------|
| 1.60V | 687.7 | 493.2 | 413.8 | 249.4 | 137.5 | 77.1 | 56.5 | 37.3 | 25.0 | 20.4 | 10.7 |
| 1.67V | 663.5 | 478.4 | 405.7 | 246.7 | 137.0 | 76.5 | 55.9 | 37.2 | 25.0 | 20.4 | 10.7 |
| 1.70V | 611.7 | 454.5 | 388.4 | 239.7 | 133.7 | 74.7 | 54.8 | 36.4 | 24.6 | 20.2 | 10.7 |
| 1.75V | 565.9 | 431.7 | 372.8 | 232.8 | 129.4 | 72.5 | 53.4 | 35.9 | 24.4 | 20.0 | 10.6 |
| 1.80V | 508.2 | 396.2 | 349.0 | 221.4 | 124.3 | 70.4 | 52.2 | 35.3 | 23.9 | 19.7 | 10.4 |
| 1.85V | 432.2 | 351.1 | 318.1 | 208.6 | 120.0 | 68.1 | 50.4 | 34.2 | 23.4 | 19.3 | 10.2 |

Dimensions

IT Terminal

Unit: mm (inches)

Torque: 48 inch-pounds



Contact Information

SigmasTek
7651 W 100th Place
Bridgeview, IL 60455, USA

T: (888) 988-8290
www.sigmastek.com
order@sigmastek.com