

### Specifications

Nominal Voltage	6V	
Nominal Capacity	214AH	20HR (1.75V/cell)
Dimension	Length	320mm (12.60 inches)
	Width	175mm (6.90 inches)
	Height	226mm (8.90 inches)
	Total Height (with Terminal)	229mm (9.02 inches)
	Approximate Weight	27.31 kg (60.20 lbs)
Battery Type	Valve Regulated Lead-Acid Battery, AGM Design	
Terminal Type	IT	
Max. Discharge Current	2520A	
Internal Resistance	1.3mΩ	
Operating Temp. Range	Discharge:	-15°C (5°F)~50°C (122°F)
	Charge:	0°C (32°F)~40°C (104°F)
	Storage:	-15°C (5°F)~40°C (104°F)
Nominal Operating Temp. Range	25±3°C (77±5°F)	
Acceptable Float Voltage Range	13.5V-13.8V at 25°C (77°F)	
Container Material	ABS (UL94 V-0) flame retardant case	
Self Discharge	≤ 3% of capacity declined per month at 25°C (77°F)	



### Applications

- Uninterruptible Power Supply (UPS)
- Emergency power supply
- Emergency lighting
- Electronic apparatus and equipment
- Solar power systems



### Constant Current Discharge (Amperes Per Battery) at 25°C (77°F)

F.V. (V/cell) \ Discharge Time	5min	10min	15min	30min	1h	2h	3h	5h	8h	10h	20h
1.60V	633.7	468.7	384.7	240.5	141.8	81.3	58.5	37.8	25.3	21.0	11.3
1.67V	584.4	438.4	364.6	231.0	137.1	78.9	57.0	37.0	24.7	20.6	11.1
1.70V	544.3	409.5	343.6	221.5	132.7	76.8	56.0	36.4	24.3	20.2	10.9
1.75V	516.6	383.0	321.7	209.0	126.4	74.3	54.6	35.7	23.9	19.9	10.7
1.80V	441.0	352.8	298.2	197.4	121.0	71.7	52.9	34.9	23.5	19.5	10.5
1.85V	378.0	313.7	274.7	183.9	115.3	68.7	50.7	34.1	22.9	19.1	10.2

### Constant Power Discharge (Watts Per Cell) at 25°C (77°F)

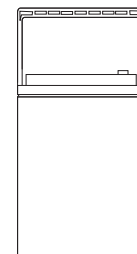
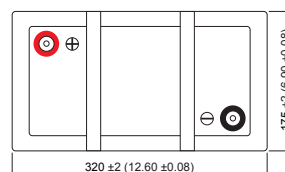
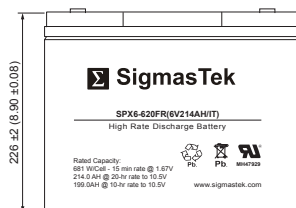
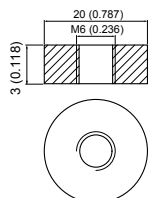
F.V. (V/cell) \ Discharge Time	5min	10min	15min	30min	1h	2h	3h	5h	8h	10h	20h
1.60V	1134.4	847.4	706.0	448.6	268.6	155.1	112.1	73.3	49.7	41.4	22.5
1.67V	1066.5	809.2	681.0	440.1	264.7	153.1	111.3	73.1	49.2	41.3	22.5
1.70V	1003.7	764.1	647.4	424.4	257.5	149.9	109.9	72.2	48.7	40.9	22.2
1.75V	962.1	721.4	612.2	403.5	247.0	146.1	107.9	71.1	48.1	40.4	22.0
1.80V	829.1	673.1	572.5	383.9	238.2	141.9	105.2	70.0	47.5	39.9	21.6
1.85V	719.0	603.6	532.1	360.5	228.7	137.0	101.4	68.8	46.8	39.3	21.0

### Dimensions

#### IT Terminal

Unit: mm (inches)

Torque: 48 inch-pounds



### Contact Information

SigmasTek  
7651 W 100th Place  
Bridgeview, IL 60455, USA

T: (888) 988-8290  
www.sigmastek.com  
order@sigmastek.com